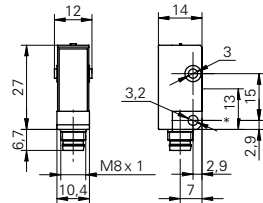


## Through beam sensors

## FSDK 10D9601/S35A

## dimension drawing



\* emitter axis

## general data

type	through beam sensor
emitter / receiver	emitter
light source	pulsed red LED
actual range $S_b$	5 m
nominal range $S_n$	6 m
wave length	660 nm

## electrical data

voltage supply range +Vs	10 ... 30 VDC
current consumption max. (no load)	23 mA
current consumption typ.	15 mA
reverse polarity protection	yes

## mechanical data

width / diameter	10,4 mm
height / length	27 mm
depth	14 mm
type	rectangular
housing material	plastic (ASA)
front (optics)	PMMA
connection types	connector M8 4 pin

## ambient conditions

operating temperature	-25 ... +65 °C
protection class	IP 67

## photo



## connection diagram

