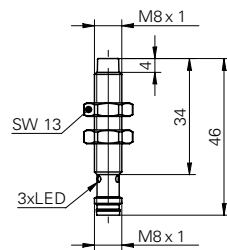


Inductive proximity switch

IFRM 08N13G1/S35L

dimension drawing



general data

special type	enhanced distance (GammaProx)
nominal sensing distance S_n	6 mm
hysteresis	2 ... 25 % of S_r
output indicator	3 port LED red
mounting type	unshielded

electrical data

switching frequency	< 400 Hz
voltage supply range +Vs	12 ... 30 VDC
current consumption max.	18 mA
output circuit	NPN make function (NO)
voltage drop Vd	< 2 VDC
output current	< 200 mA
short circuit protection	yes
reverse polarity protection	yes

mechanical data

material (sensing face)	PBT
housing length	46 mm
connection types	connector M8
type	cylindrical threaded
dimension	8 mm
housing material	stainless steel

ambient conditions

operating temperature	0 ... +60 °C
protection class	IP 67

photo



connection diagram



- 4-fold sensing distance