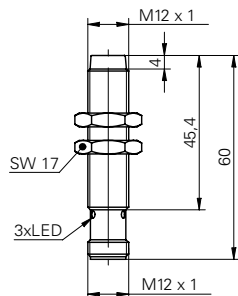


Inductive proximity switch

IFRM 12P13G1/S14L

dimension drawing



general data

special type	enhanced distance (GammaProx)
nominal sensing distance S_n	10 mm
hysteresis	2 ... 25 % of S_r
output indicator	3 port LED red
mounting type	unshielded

electrical data

switching frequency	< 400 Hz
voltage supply range +Vs	12 ... 30 VDC
current consumption max.	18 mA
output circuit	PNP make function (NO)
voltage drop V_d	< 2 VDC
output current	< 200 mA
short circuit protection	yes
reverse polarity protection	yes

mechanical data

material (sensing face)	PBT
housing length	60 mm
connection types	connector M12
type	cylindrical threaded
dimension	12 mm
housing material	brass nickel plated

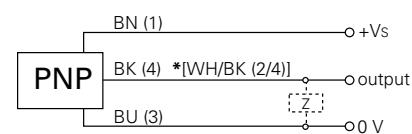
ambient conditions

operating temperature	0 ... +60 °C
protection class	IP 67

photo



connection diagram



* .../S14L pin 2 & 4 electrically connected

- 5-fold sensing distance