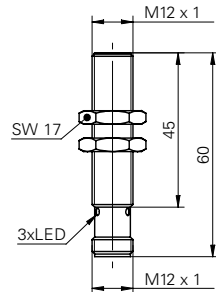


## Inductive proximity switch

## IFRM 12P37G1/S14L

## dimension drawing



## general data

special type	enhanced distance (GammaProx)
nominal sensing distance $S_n$	6 mm
hysteresis	2 ... 25 % of $S_r$
output indicator	3 port LED red
mounting type	quasi shielded

## electrical data

switching frequency	< 400 Hz
voltage supply range +Vs	12 ... 30 VDC
current consumption max.	18 mA
output circuit	PNP break function (NC)
voltage drop $V_d$	< 2 VDC
output current	< 200 mA
short circuit protection	yes
reverse polarity protection	yes

## mechanical data

material (sensing face)	PBT
housing length	60 mm
connection types	connector M12
type	cylindrical threaded
dimension	12 mm
housing material	brass nickel plated

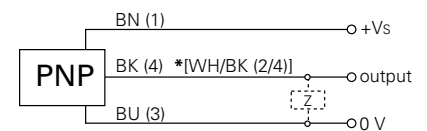
## ambient conditions

operating temperature	-25 ... +75 °C
protection class	IP 67

## photo



## connection diagram



\* .../S14L pin 2 & 4 electrically connected

- Not for flush mounting in mild steel
- triple sensing distance