



GIOVENZANA

INTERNATIONAL B.V.

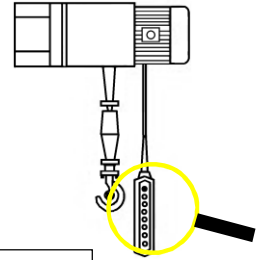


HANDLING SYSTEM

Pendant stations



Hoist control: **P02 P03 HP03 DC30**



LIFTING EQUIPMENT

Characteristics:

- Bi-directional, mechanically interlocked
- IP 65 double insulation IEC/EN60529
- General and electrical data page 23
- Laser engraved symbols comply with EN60204-1, FEM 9.941
- Shock proof and heat resistant



P02



P03



HP03



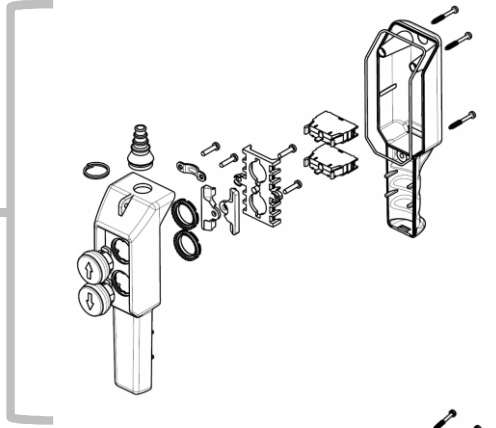
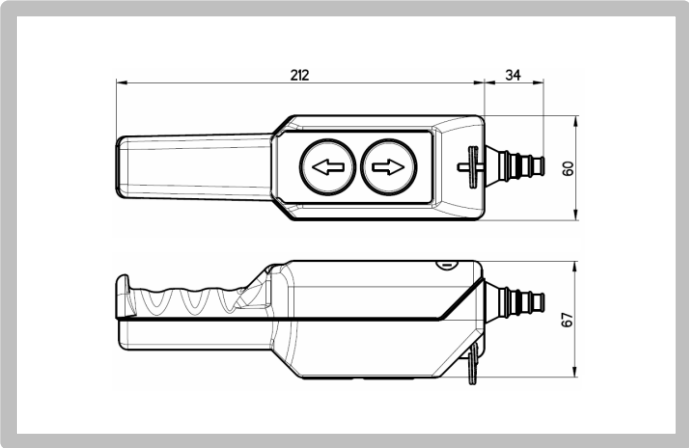
DC30

PICTURE	LAYOUT	CONFIGURATION	CODE	CONTACT TYPE	WEIGHT [gr]	
		SINGLE SPEED (* TILTING BUTTON 16A – 250Vac ½ HP)	P02.RM	1 NO* 1 NO*	230	
		SINGLE SPEED	P02.1		230	
			P02.2		250	
			P02.4		250	
		(* HIGH POWER CONTACTS DIRECT MOTOR CONTROL 1Kw 1ph	P02.CD		230	
	TWO SPEED	P02.D2		250		
		SINGLE SPEED	P03.1		440	
			P03.2		450	
			P03.3		460	
			P03CD	(* HIGH POWER CONTACTS DIRECT MOTOR CONTROL 1Kw 1ph		460
		TWO SPEED	P03D2		460	
		SINGLE SPEED	HP03		330	
		TWO SPEED	HP03.D2		350	
		SINGLE SPEED	DC30		600	
			DC30.RG		600	
		TWO SPEED	(* Ith 25A EXTRA HIGH POWER CONTACTS BLOCK FOR DIRECT MOTOR CONTROL : 2.2kW 1ph / 4kW 3ph	DC30.GE		600
			DC30D2		650	

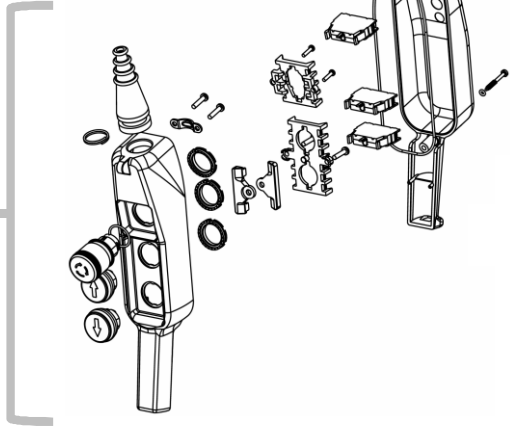
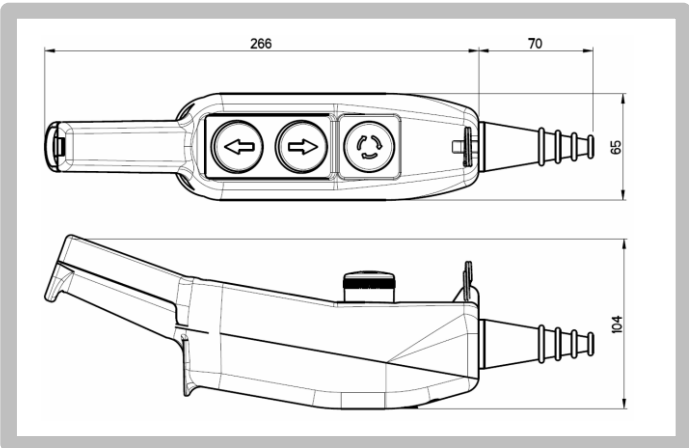


LIFTING EQUIPMENT

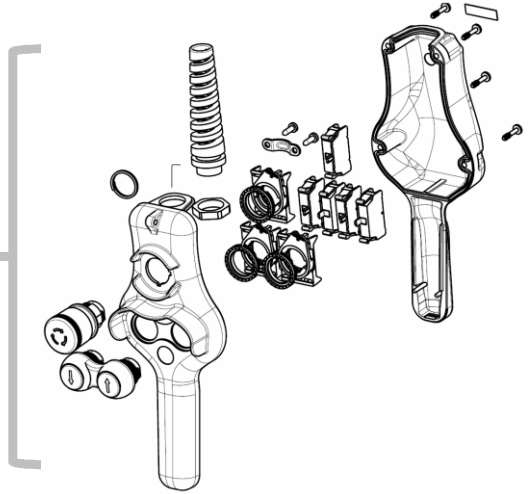
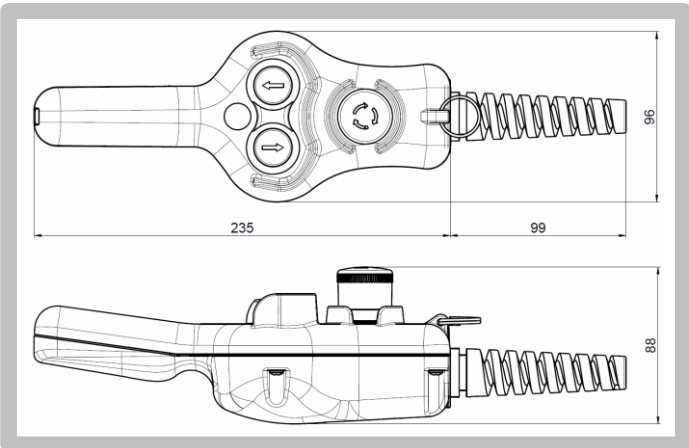
P02



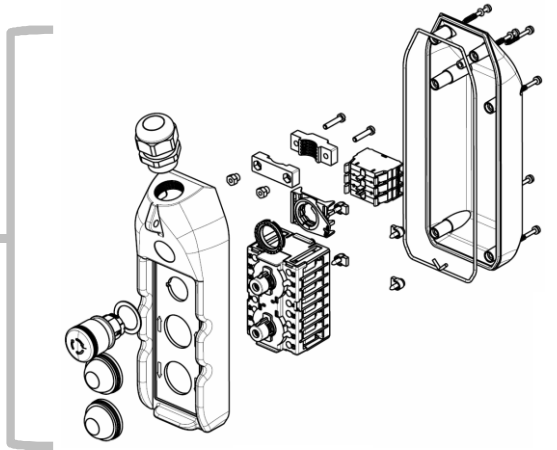
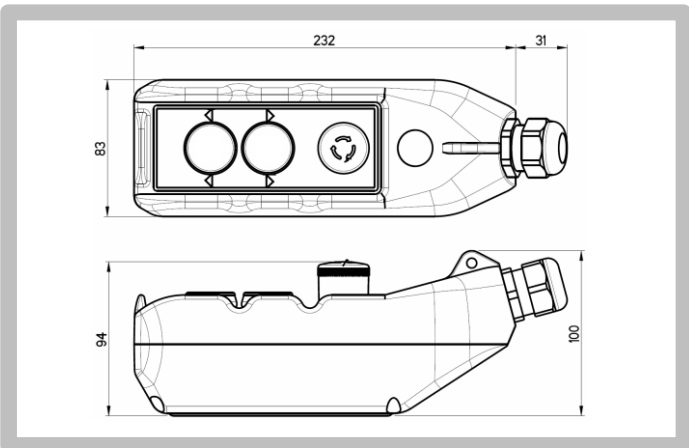
P03



HP03



DC30



Pendant Stations

cranes control circuits: **PL**



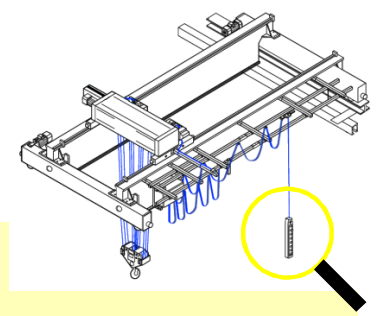
LIFTING EQUIPMENT



KIT Available See pg. 18
Available in UL/CSA req.

Characteristics:

- Bi-directional, mechanically interlocked
- IP 65 double insulation IEC/EN60529
- General and electrical data page 23
- Laser engraved symbols comply with EN60204-1, FEM 9.941
- Shock proof and heat resistant
- Available in UL/CSA requirements



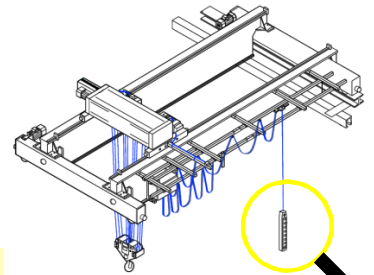
CODE	PL05/E	PL05D2/E	PL05D4/E	PL07/E	PL07D2/E	PL07D4/E	PL07D6/E	PL08/E	PL08D2/E	PL08D4/E	PL08D6/E	PL10/E	PL12/E																																																								
weight [gr.]	600	625	655	800	830	855	880	890	915	945	970	1.105	1.290																																																								
N° push button	5	5	5	7	7	7	7	8	8	8	8	10	12																																																								
L length [mm]	345	345	345	495	495	495	495	530	530	530	530	640	710																																																								
LAYOUT																																																																					
DIMENSIONS																																																																					
	<table border="1"> <thead> <tr> <th colspan="8">PUSH BUTTON TYPE – CONTACT TYPE COUPLED</th> </tr> </thead> <tbody> <tr> <td></td> <td></td> <td></td> <td></td> <td></td> <td></td> <td></td> <td></td> </tr> <tr> <td></td> <td></td> <td></td> <td></td> <td></td> <td></td> <td></td> <td></td> </tr> <tr> <td></td> <td></td> <td></td> <td></td> <td></td> <td></td> <td></td> <td></td> </tr> <tr> <td></td> <td></td> <td></td> <td></td> <td></td> <td></td> <td></td> <td></td> </tr> <tr> <td></td> <td></td> <td></td> <td></td> <td></td> <td></td> <td></td> <td></td> </tr> <tr> <td></td> <td></td> <td></td> <td></td> <td></td> <td></td> <td></td> <td></td> </tr> </tbody> </table> <p>(*) two speed contact block</p>													PUSH BUTTON TYPE – CONTACT TYPE COUPLED																																																							
PUSH BUTTON TYPE – CONTACT TYPE COUPLED																																																																					

Pendant Stations

cranes control circuits: **PLB**



KIT Available See pg. 18

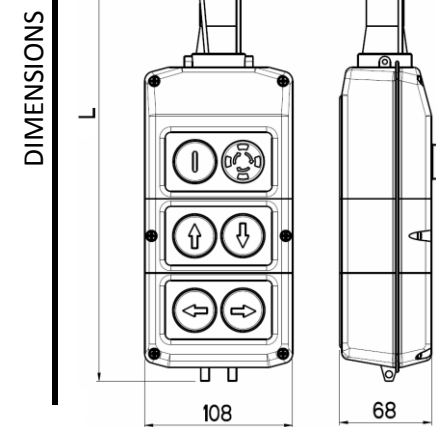
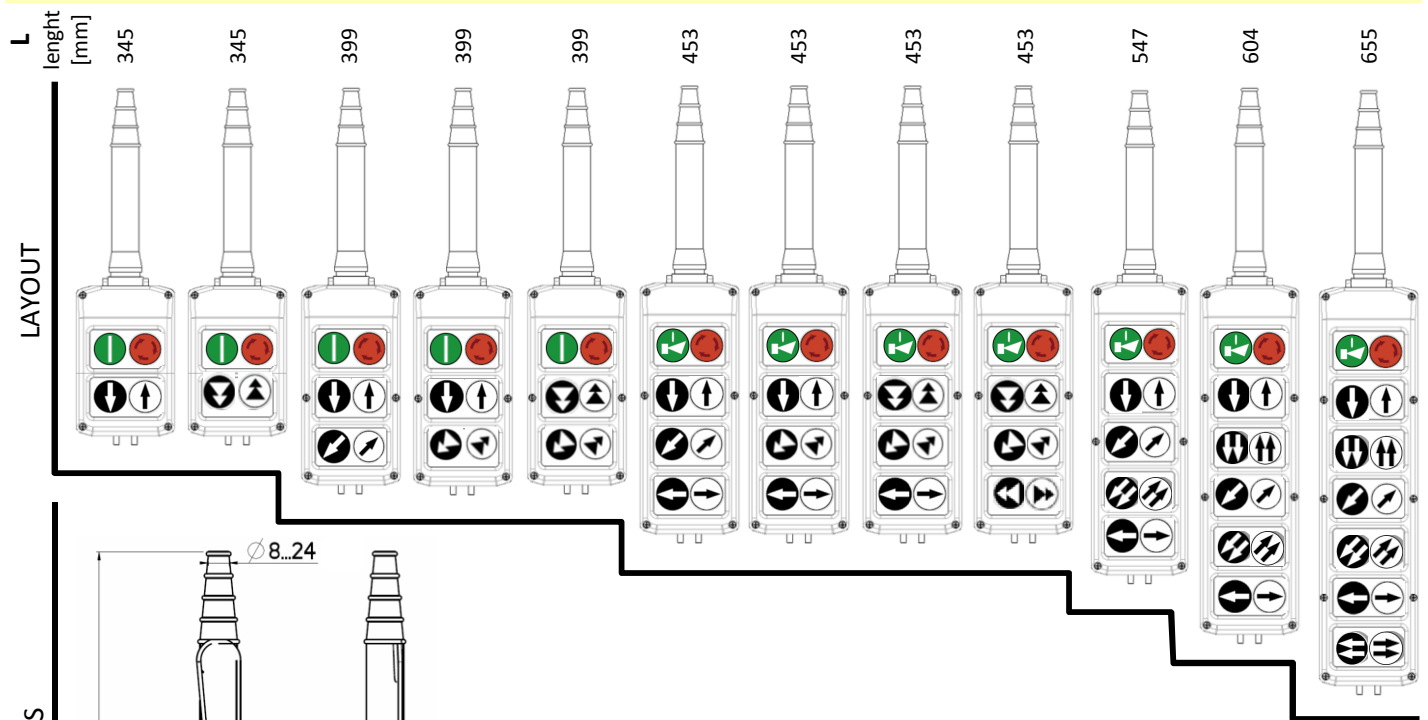


LIFTING EQUIPMENT

Characteristics:

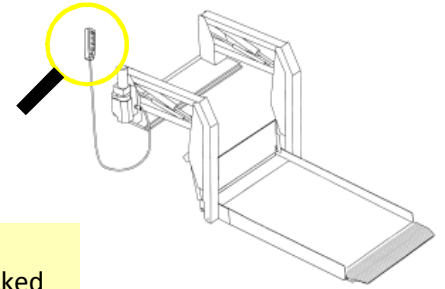
- Bi-directional, mechanically interlocked
- IP 65 double insulation IEC/EN60529
- General and electrical data page 23
- Laser engraved symbols comply with EN60204-1, FEM 9.941
- Shock proof and heat resistant

CODE	PLB04/E	PLB04D2/E	PLB06/E	PLB06D2/E	PLB06D4/E	PLB08/E	PLB08D2/E	PLB08D4/E	PLB08D6/E	PLB10/E	PLB12/E	PLB14/E
weight [gr.]	530	555	700	730	755	860	895	920	945	1.080	1.245	1.445
N° push button	4	4	6	6	6	8	8	8	8	10	12	14



TIPO DI PULSANTE – TIPO DI CONTATTO ABBINATO								

(*) two speed contact block



LIFTING EQUIPMENT

KIT Available See pg. 18



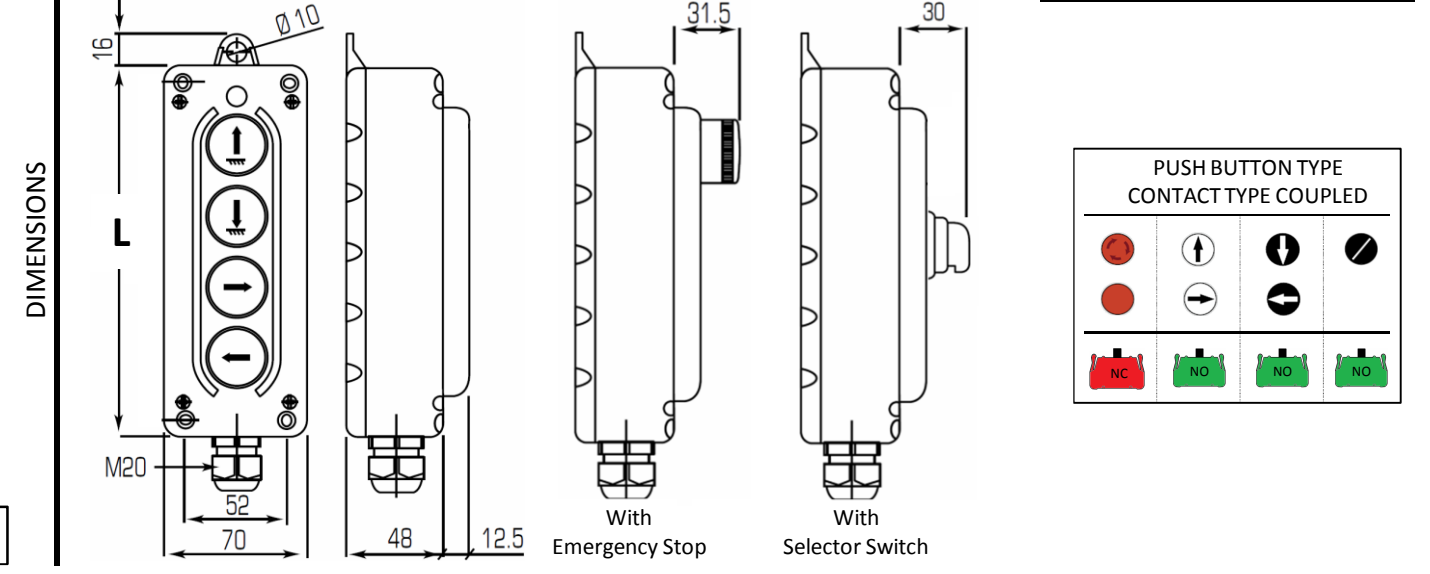
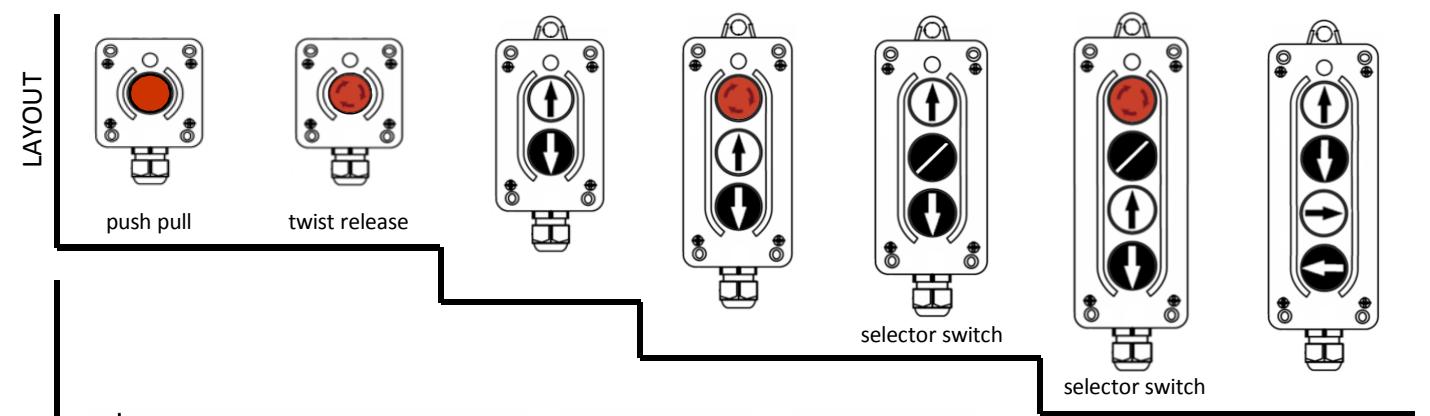
MOBILE-PENDANT FIXING (with WALL BRACKET accessories) WALL FIXING

Characteristics:

- Compact and modern design
- Bi-directional, mechanically interlocked
- IP 65 double insulation IEC/EN60529
- General and electrical data page 23
- Laser engraved symbols comply with EN60204-1, FEM 9.941
- Contact block with spring cage terminal
- Shock proof and heat resistant
- Mobile-Pendant (with wall bracket accessories) or wall fixed mounting

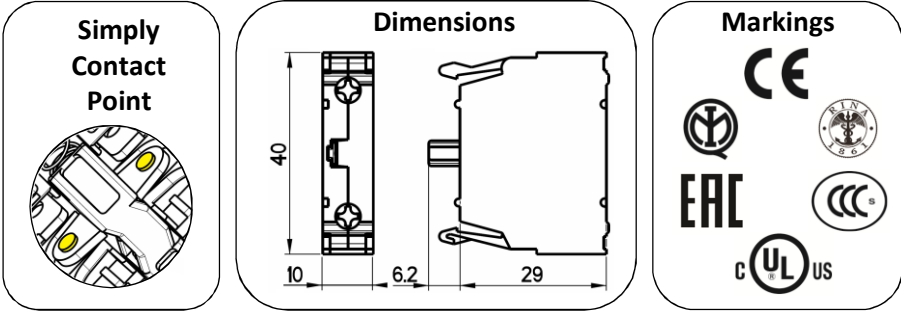
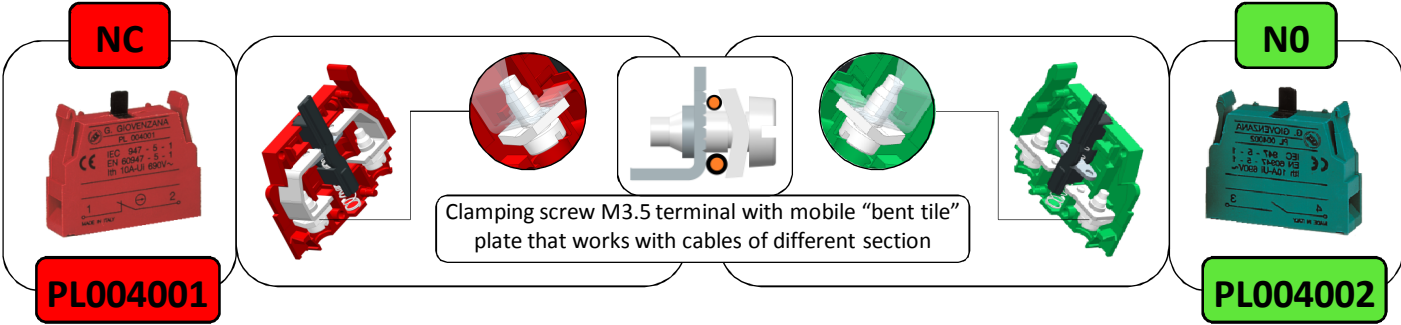
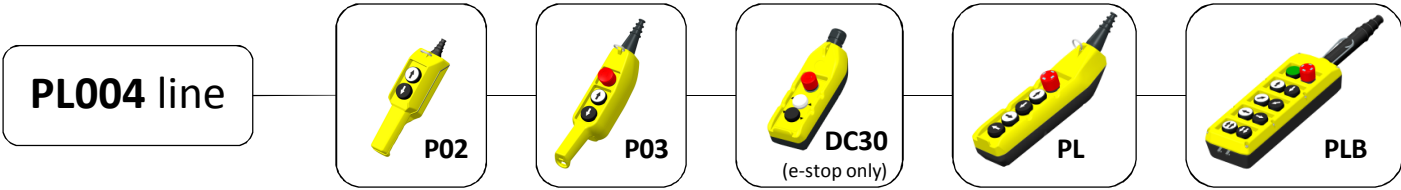
CODE	TLP1-EPP	TLP1-ESR	TLP2	TLP3-B	TLP3-D	TLP4-E	TLP4-C
------	----------	----------	------	--------	--------	--------	--------

weight [gr.]	120	120	200	255	255	314	314
N° push button	1	1	2	3	3	4	4
L length [mm]	80	80	115	150	150	185	185

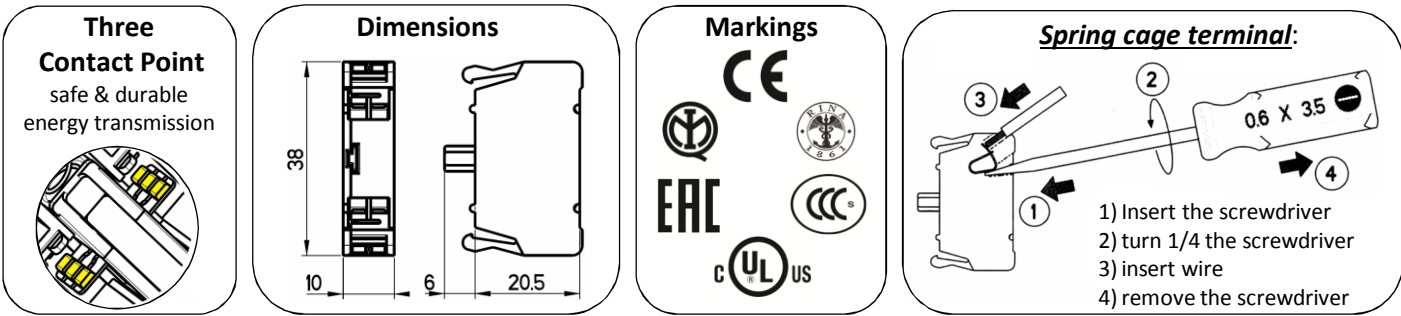
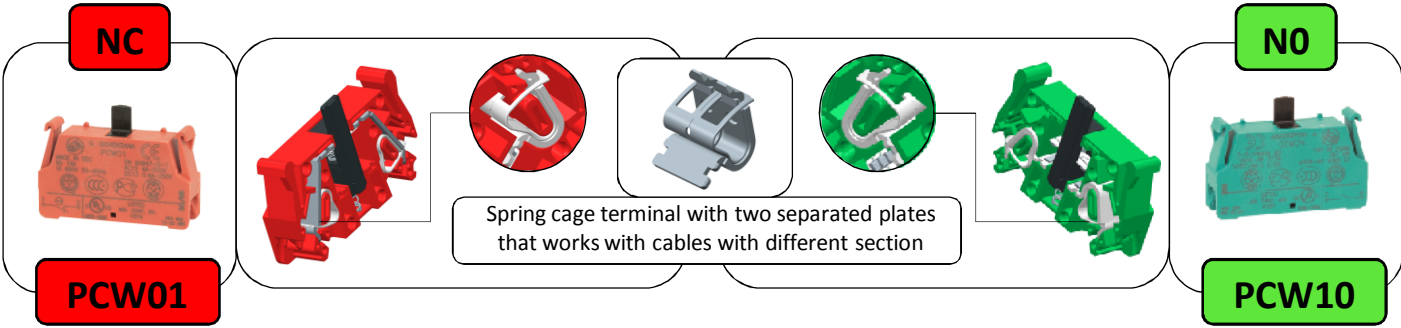
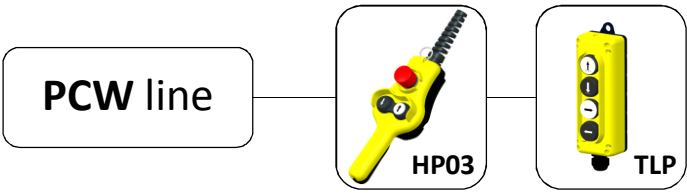




LIFTING EQUIPMENT



Technical data see page 23



Pendant / Fixed Stations



KIT To be customized
Create your customized station in 4 steps

LIFTING EQUIPMENT

STEP 1
Choose station type



P02



P03



PL



PLB



TLP



HOLE n°	CODE	WEIGHT [gr]
2	P02K	180
3	P03K	258
5	PL05K	410
7	PL07K	540
8	PL08K	600
10	PL10K	700
12	PL12K	800
4	PLB04K	410
6	PLB06K	510
8	PLB08K	610
10	PLB10K	710
12	PLB12K	810
14	PLB14K	910
1	TLP1K	100
2	TLP2K	130
3	TLP3K	160
4	TLP4K	200



STEP 2 Choose OPERATOR

STEP 3 Choose CONTACT TYPE

LIFTING EQUIPMENT

(*) Symbols according to FEM 9.941
Customized engraving available (min. quantity applies)

P02-P03-PL-PLB

TLP

(*)

		GREEN START	GREEN START ALARM	MUSHROOM OPERATOR Ø 30 TURN TO RELEASE EN ISO 13850
PL005019	PL005004			
		ALARM	BLUE	WITH VISION STANDARD
PL005027	PL005012			PL013001 PL013002
		WHITE	BLACK	MUSHROOM OPERATOR Ø 40
PL005023	PL005008			
		RED	GREEN	
PL005020	PL005005			PL013003
		KEY SWITCH		MUSHROOM OPERATOR Ø 40 KEY RELEASE
PL005028	PL005013			
				LENS CAP
PL005024	PL005009			
		0-1 90° PL006001		PL00800.
PL005031	PL005016	1-0-2 45° PL006002		
		0<1 45° PL006004		
		(key removable in "0")		
		ROTARY SWITCH		
PL005032	PL005017			
		0-1 90° PL007001		
PL005033	PL005018	1-0-2 45° PL007002		
		1>0<2 45° PL007003		

CONTACT BLOCKS

NC NO

1 NC PL004001
1 NO PL004002

CONTACT BLOCKS

NC NO

1 NC PCW01
1 NO PCW10

LED LAMP

POWER SUPPLY	CODE
AC/DC 12V	PL0045L12
AC/DC 24V	PL0045L24
AC/DC 48V	PL0045L48
AC/DC 110V	PL0045L110
AC 220V	PL0045L220

LAMP HOLDERS

BA9s PL004007

LED LAMP

POWER SUPPLY	CODE
AC/DC 12V	PCW5L12
AC/DC 24V	PCW5L24
AC/DC 48V	PCW5L48
AC/DC 110V	PCW5L110
AC 220V	PCW5L220

LAMP HOLDERS

BA9s PCWAD

(*)

PL005021	PL005006
PL005029	PL005014
PL005025	PL005010

NOT for TLP

MULTI-SPEED CONTACT BLOCKS

DOUBLE STEP
1NO+1NO PL004010

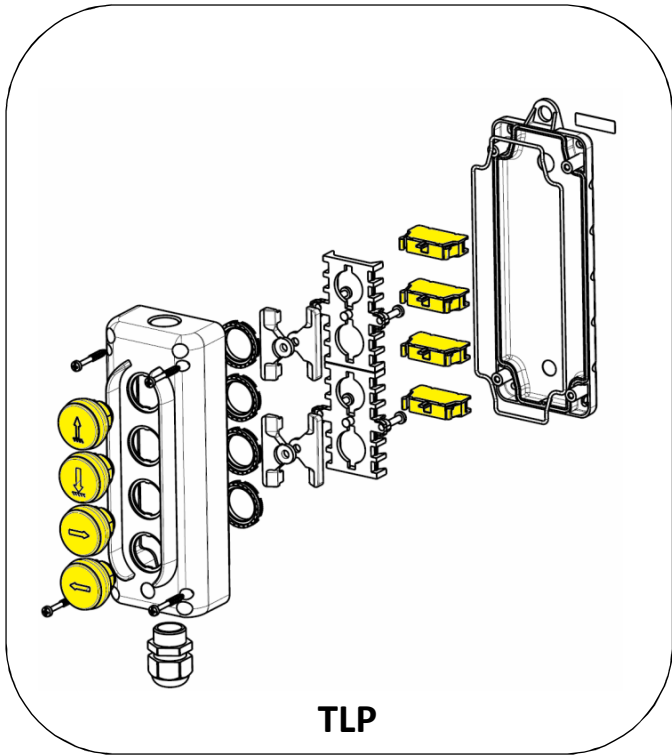
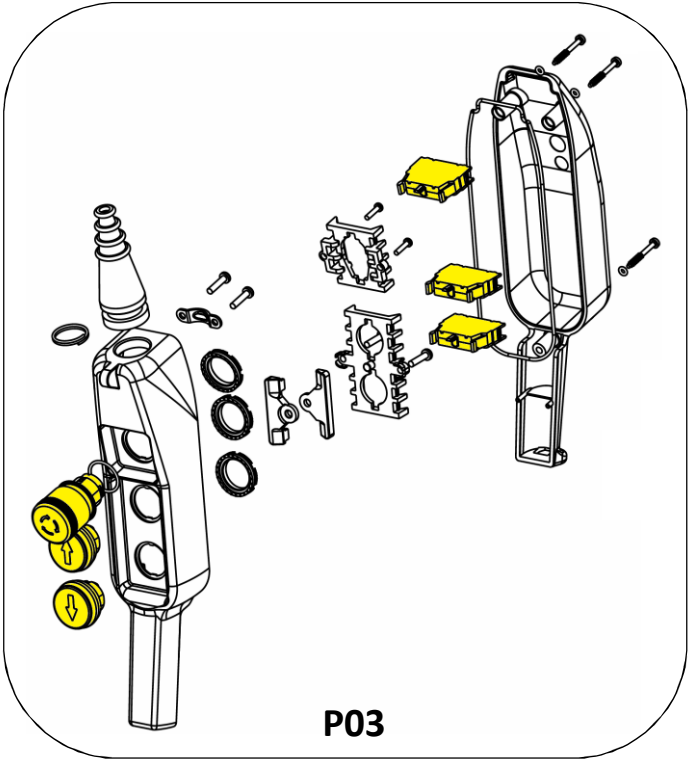
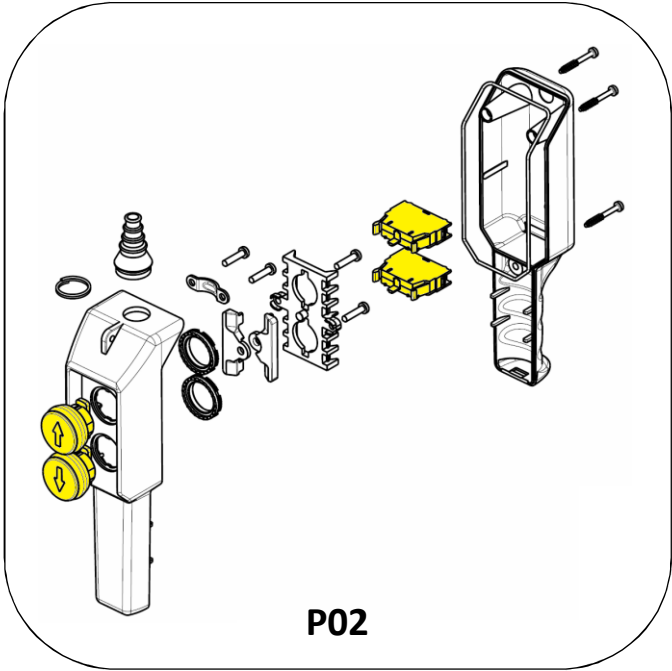
HOLE PLUG

PL015001



LIFTING EQUIPMENT

STEP 4
Mounting instructions



STEP 1
kit enclosures include

- Pendant stations (box, screws, gasket)
- Cable sleeve
- Cable clamp
- Suspension ring
- Push button interlock

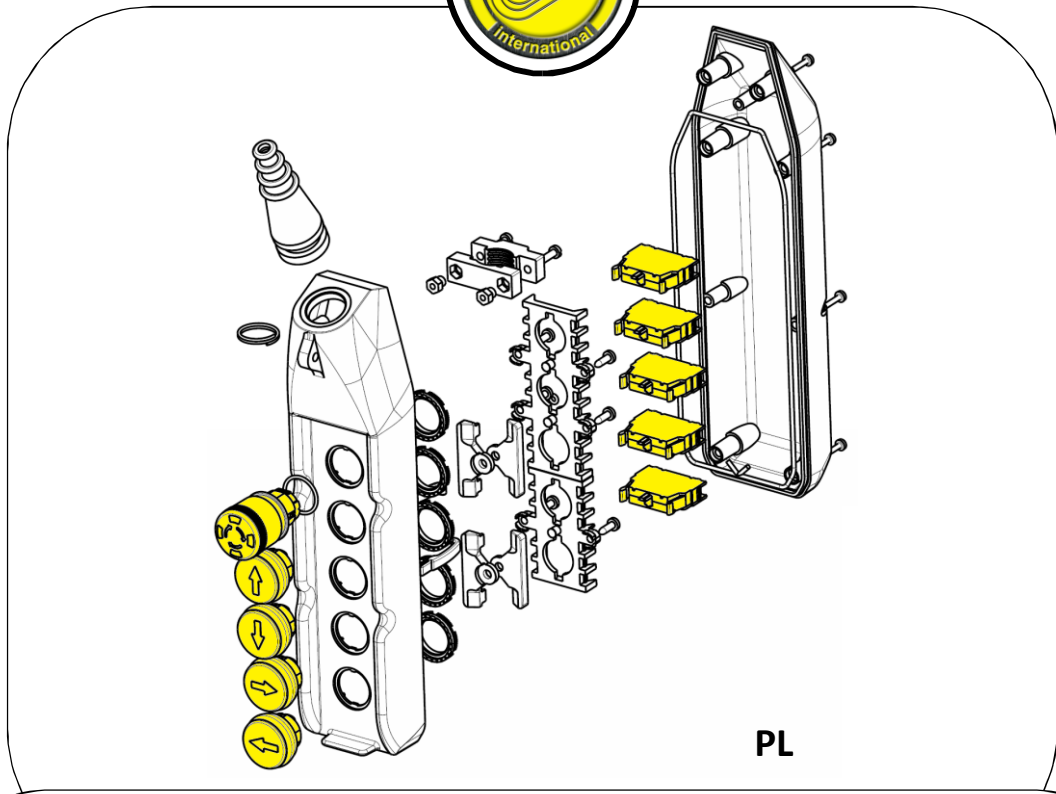
STEP 2-3
(item in yellow colour)

- Contact block
- Push buttons

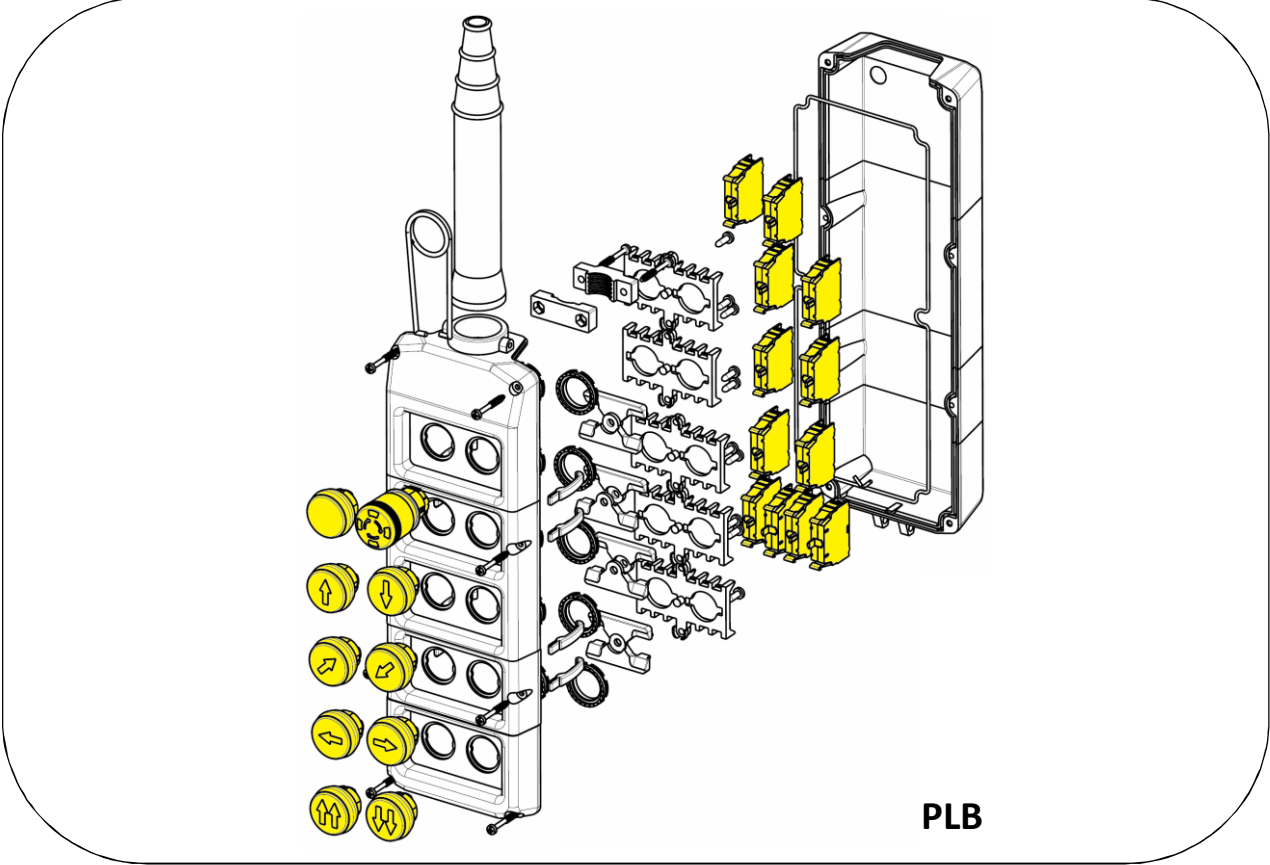
must be chosen and purchased separately from the enclosure kit



LIFTING EQUIPMENT



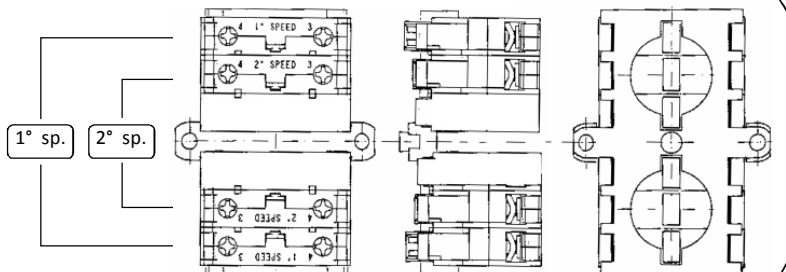
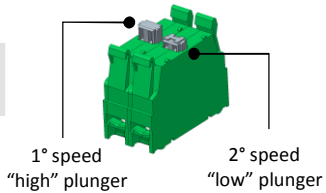
PL



PLB

**ASSEMBLY INSTRUCTION FOR
1^a - 2^a SPEED CONTACT BLOCKS**

PL004010





LIFTING EQUIPMENT

SPARE PARTS:

P02 – P03 – PL – PLB – TLP

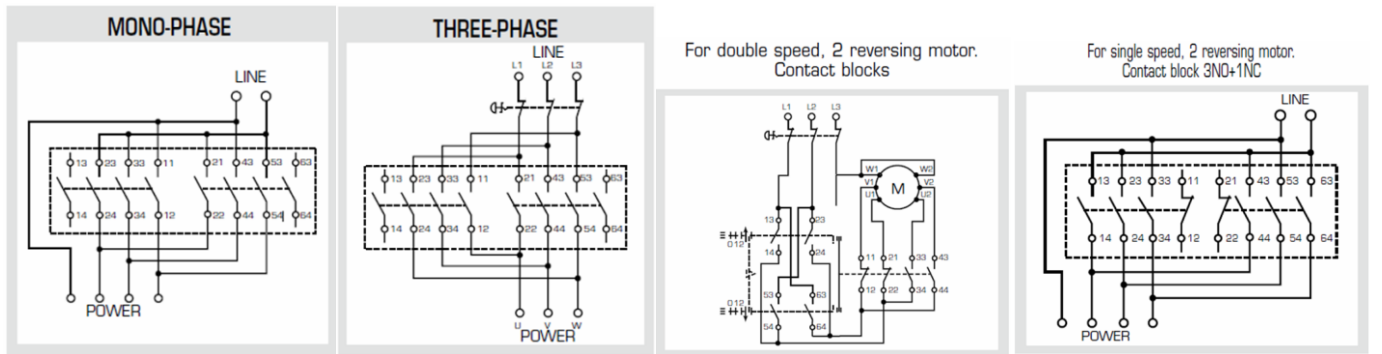
COUPLING PLATE		INTERLOCK		CABLE CLAMP LEVER	CABLE SLEEVE	
2 HOLES	PL003001	TOP	PL011001	PL012001	VERSION	CODE
3 HOLES	PL003002	BOTTOM	PL011002		P02 cable Ø 7...14	12906011
				NOT for TLP	P03 - PLO5 cable Ø 7...18	12906006
					PL07...PL12 PLB04-PLB06 cable Ø 9...21	12906004
					PLB08-PLB14 cable Ø 12...24	12906005
					NOT for TLP	

☐ Operators and contacts block codes please go to page 19

DC30

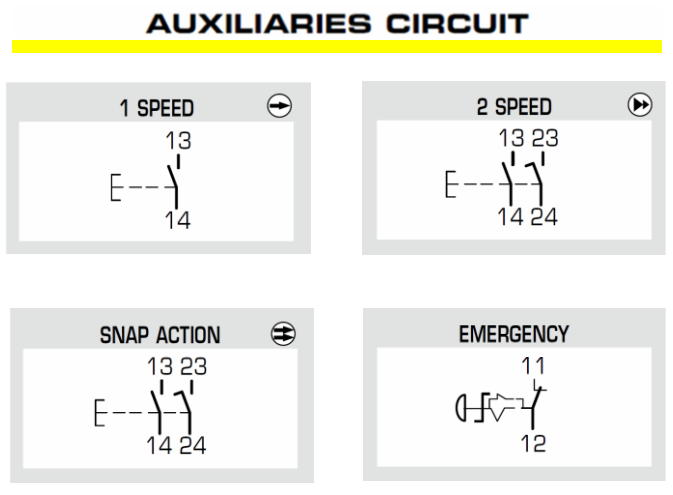
CONTACT BLOCKS		RUBBER BUTTON COVER		
	FOR SINGLE SPEED · REVERSING MOTORS			
		CODE		FOR
	3NO+1NC	30205085		DC30 DC30.GE
		30205087		DC30.RG
TWO-SPEED REVERSING MOTORS				
	CODE	FOR		
4NO (2NO+2NC progressive)	30205086	DC30D2		
mechanical interlock				
		COLOUR	CODE	
		Black	11901044	
		White	11901046	

**DRAWINGS EXAMPLES
POWER CIRCUITS**



TLP ACCESSORIES

WALL BRACKET		SPIRAL CABLE GLAND	
HOLES	CODE	CODE	
1...3	16000061	12901054	
4	16000062		





Note: P02 – P03 – HP03 – PL line available in UL/CSA requirements

LIFTING EQUIPMENT

General characteristics		P02 – P03 – HP03 – PL – PLB – TLP						DC30	
In conformity to standards		IEC / EN60947-5-1						IEC / EN60947-3	
Material		P02	P03	HP03	PL	PLB	TLP	ABS	
		PP	ABS	ABS	ABS	ABS	PP		
Material group		II						II	
Pollution class		3						3	
Climate temperature	operating	-25°C + 70°C						-25°C + 70°C	
	storage	-30°C + 70°C						-30°C + 70°C	
Climate resistance	IEC68 part 2-3	hot damp						hot damp	
	IEC68 part 2-30	unsettled hot damp						unsettled hot damp	
Cable entry		<ul style="list-style-type: none"> ▪ P02 – P03: rubber cable sleeve Ø7...18mm ▪ PL – PLB: rubber cable sleeve Ø9...24mm ▪ HP03: spiral cable gland M20 – TLP: cable gland M20 						cable gland M25	

Electrical characteristics contact blocks		P02 – P03 – HP03 – PL – PLB – TLP						DC30	
Markings									
Rated insulation voltage [Ui]		690V						500V	
Rated thermal current [Ith]		16A						25A	
Rated impulse withstand voltage [Uimp]		4kV						4kV	
Frequency		50Hz – 50/60 Hz type PCW (HP03-TLP)						50Hz	

Rated operating current [Ie]

AC-15 alternate current	type: PL004.. P02/P03/DC30 e-stop/PL/PLB	(V)	24	60	110	240	400	440	500	690	
	type: PCW.. HP03-TLP	(A)	16	12	8	6	4	3.5	3	1	-
		(A)	10	8	6	5	4	4	4	2	-
DC-13 direct current		(V)	24	48	60	110	220	250			
	type: PL004.. P02/P03/DC30 e-stop/PL/PLB	(A)	2	1.2	0.85	0.4	0.25	-			-
	type: PCW.. HP03-TLP	(A)	2	2	1	0.4	-	0.4			-
AC-3 alternate current	1phase-2poles 230V-400V		-						2.2kW		
	3phase-3poles 230V-400V		-						3kW		
Conditional short circuit withstand current		1000A						1000A			
Fuse rating		gG 10A - 500V						aM 12A - 500V			
Contact insulation resistance		≤ 25mΩ						-			
Switching mechanism	type: PL004.. P02/P03/DC30 e-stop/PL/PLB	slow break double gap contacts single pad						slow break double gap contacts single pad			
	type: PCW.. HP03-TLP	slow break double gap contacts three pads									
Positive operation		NC contact block						-			
Terminal type	type: PL004.. P02/P03/DC30 e-stop/PL/PLB	M3.5 screw						M3.5 screw			
	type: PCW.. HP03-TLP	spring cage terminal									
Terminal capacity	type: PL004.. P02/P03/DC30 e-stop/PL/PLB	No. 1 or 2 flexible and solid conductor min 1 max 2.5 mm ²						No. 1 or 2 flexible and solid conductor min 1 max 2.5 mm ²			
	type: PCW.. HP03-TLP	No. 1 or 2 flexible and solid conductor min 0.5 max 2.5 mm ²									

UL508 characteristics

General use	600V ac	16A	-
Designation code (HD) Heavy Duty		A600-Q600	-



GIOVENZANA INTERNATIONAL B.V.

1077 XX Amsterdam, The Netherlands
WTC Strawinskylaan 1105
Ph. +31(0) 20.4413576 - Fax +31(0) 20.4413456
e-mail: giovenzana@giovenzana.com

G.M.K. K.f.t.

1068 Budapest, Hungary
Rippl Ronai ut.13
Ph. +36.37.572575 - Fax +36.37.572570
e-mail: gmk@giovenzana.com

G.T.R. LCC

Moscow, Russian Federation
Ulitsa Radio 24, Yauza Tower 4th floor
Ph. +7.495.6991296 / 6503959 - Fax +7.495.6991520
e-mail: gtr@giovenzana.com

GIOVENZANA CONTROLS Pvt. Ltd.

Malad (West) Mumbai, Maharashtra 400064, India
203, A-Wing Knox Plaza, Off Link Road Mindspace
Ph. +91.22.42640071
e-mail: ggindia@giovenzana.com

Branch

DUBAI U.A.E. P.O. Box 262146 - J.A.F.Z.A. 15, Jebel Ali Free Zone
Ph. +971.4.8870788 - Fax +971.4.8870787
e-mail: uae@giovenzana.com