



T4V10H 335-03Z

- 1 Cable entry M 20 x 1.5
- Metal enclosure
- Wide range of alternative actuators
- Good resistance to oil and petroleum spirit
- 40,5 mm x 76 mm x 38 mm
- Actuator heads can be repositioned by 4 x 90°
- Design to EN 50041
- **only for positioning tasks**

Data

Ordering data

Note (Delivery capacity)	Not available!
Product type description	T4V10H 335-03Z
Article number (order number)	101147377
EAN (European Article Number)	4030661142852
eCl@ss number, version 12.0	27-27-06-01
eCl@ss number, version 11.0	27-27-06-01
eCl@ss number, version 9.0	27-27-06-01
ETIM number, version 7.0	EC000030
ETIM number, version 6.0	EC000030

Approvals - Standards

Certificates	cULus CCC
--------------	--------------

General data

Housing construction form	Norm construction design
---------------------------	--------------------------

Housing coating material	Painted
Lever material	Metal film
Material of the rod	Plastic (Polyamid)
Gross weight	285 g

General data - Features

Number of safety contacts	3
---------------------------	---

Safety classification

Standards	BG-GS-ET-15 EN ISO 13849-1 EN IEC 60947-5-1
Mission time	20 Year(s)

Safety classification - Safety outputs

B _{10D} Normally-closed contact (NC)	20,000,000 Operations
---	-----------------------

Mechanical data

Actuating element	Rod lever
Mechanical life, minimum	30,000,000 Operations
Actuating speed, maximum	2.5 m/s
Note (Actuating speed)	Actuating speed with actuating angle 30° to switch axis
Note (Switchover time)	Switchover time in accordance with actuating speed
Actuating torque, minimum	0.3 Nm

Mechanical data - Connection technique

Termination	Screw terminals M20 x 1.5
Cable section, minimum	0.75 mm ²
Cable section, maximum	2.5 mm ²
Note	All indications including the conductor ferrules.

Mechanical data - Dimensions

Length x Width x Height	Height of sensor: 111.5 mm (without rod)
Length of sensor	38 mm
Width of sensor	40.5 mm

Ambient conditions

Ambient temperature	-30 ... +80 °C
---------------------	----------------

Ambient conditions - Insulation values

Rated insulation voltage U_i	500 V
Rated impulse withstand voltage U_{imp}	4 kV

Electrical data

Thermal test current	10 A
Required rated short-circuit current	1,000 A
Utilisation category AC-15	230 VAC
Utilisation category AC-15	4 A
Utilisation category DC-13	24 VDC
Utilisation category DC-13	4 A
Switching element	Opener (NC)
Switching principle	Slow action
Bounce duration, maximum	2 ms
Maximum switching frequency	5,000 /h
Material of the contacts, electrical	Silver

Pictures

Product picture (catalogue individual photo)



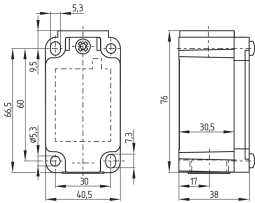
ID: k335hf03

| 1.0 MB | .jpg | 352.778 x 1124.303 mm - 1000 x 3187 px - 72 dpi

| 96.5 kB | .png | 74.083 x 236.008 mm - 210 x 669 px - 72 dpi

| 20.7 kB | .jpg | 38.806 x 123.472 mm - 110 x 350 px - 72 dpi

Dimensional drawing basic component



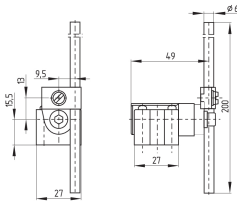
ID: 1-335g01

| 96.7 kB | .cdr |

| 4.5 kB | .png | 74.083 x 51.506 mm - 210 x 146 px - 72 dpi

| 105.8 kB | .jpg | 352.778 x 245.886 mm - 1000 x 697 px - 72 dpi

Dimensional drawing actuator



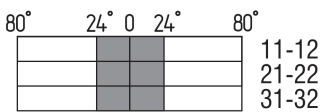
ID: 1h336g03

| 72.8 kB | .cdr |

| 3.8 kB | .png | 74.083 x 52.211 mm - 210 x 148 px - 72 dpi

| 84.2 kB | .jpg | 352.778 x 248.003 mm - 1000 x 703 px - 72 dpi

Switch travel diagram



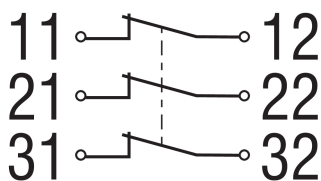
ID: kh335s24

| 24.3 kB | .cdr |

| 1.7 kB | .png | 74.083 x 24.694 mm - 210 x 70 px - 72 dpi

| 54.7 kB | .jpg | 352.778 x 117.475 mm - 1000 x 333 px - 72 dpi

Diagram



ID: k3o3sk01

| 18.9 kB | .cdr |

| 82.7 kB | .jpg | 352.778 x 191.558 mm - 1000 x 543 px - 72 dpi

| 3.2 kB | .png | 74.083 x 40.217 mm - 210 x 114 px - 72 dpi

| 6.7 kB | .png | 50.038 x 27.178 mm - 591 x 321 px - 300 dpi

| 2.4 kB | .jpg | 33.161 x 17.992 mm - 94 x 51 px - 72 dpi

Schmersal Ltd., Sparrowhawk Close, WR14 1GL Malvern

The details and data referred to have been carefully checked. Images may diverge from original. Further technical data can be found in the manual. Technical amendments and errors possible.

Generated on: 05/04/2024, 10:34