



## T4V10H 336-02ZH

- slim design
- 1 Cable entry M 20 x 1.5
- **only for positioning tasks**
- Design to EN 50041
- Thermoplastic enclosure
- Lever angle adjustable in 10° steps
- Double-insulated
- Good resistance to oil and petroleum spirit
- Wide range of alternative actuators
- Actuator heads can be repositioned by 4 x 90°

## Data

### Ordering data

Product type description	T4V10H 336-02ZH
Article number (order number)	151060465
eCl@ss number, version 12.0	27-27-06-01
eCl@ss number, version 11.0	27-27-06-01
eCl@ss number, version 9.0	27-27-06-01
ETIM number, version 7.0	EC000030
ETIM number, version 6.0	EC000030

### Approvals - Standards

Certificates	cULus CCC
--------------	--------------

### General data

Housing construction form	Norm construction design
---------------------------	--------------------------

Actuator type to EN 50041	D
Housing material	Plastic, glass-fibre-reinforced
Material of the rod	Plastic (Polyamid)
Gross weight	178 g

## General data - Features

Number of safety contacts	2
---------------------------	---

## Safety classification

Standards	BG-GS-ET-15 EN ISO 13849-1 EN IEC 60947-5-1
Mission time	20 Year(s)

## Safety classification - Safety outputs

B <sub>10D</sub> Normally-closed contact (NC)	20,000,000 Operations
---	-----------------------

## Mechanical data

Actuating element	Rod lever
Mechanical life, minimum	30,000,000 Operations
Actuating speed, maximum	2.5 m/s
Note (Actuating speed)	Actuating speed with actuating angle 30° to switch axis
Note (Switchover time)	Switchover time in accordance with actuating speed
Actuating torque, minimum	0.3 Nm

## Mechanical data - Connection technique

Termination	Screw terminals M20 x 1.5
Cable section, minimum	0.75 mm <sup>2</sup>
Cable section, maximum	2.5 mm <sup>2</sup>
Note	All indications including the conductor ferrules.

## Mechanical data - Dimensions

Length x Width x Height	Height of sensor: 111.5 mm (without rod)
Length of sensor	52 mm
Width of sensor	40.5 mm

## Ambient conditions

Degree of protection	IP65 IP67
Ambient temperature	-30 ... +80 °C

## Ambient conditions - Insulation values

Rated insulation voltage $U_i$	500 V
Rated impulse withstand voltage $U_{imp}$	6 kV

## Electrical data

Thermal test current	10 A
Required rated short-circuit current	1,000 A
Utilisation category AC-15	230 VAC
Utilisation category AC-15	4 A
Utilisation category DC-13	24 VDC
Utilisation category DC-13	4 A
Switching element	Opener (NC)
Switching principle	Slow action with staggered contacts
Bounce duration, maximum	2 ms
Maximum switching frequency	5,000 /h
Material of the contacts, electrical	Silver

## Ordering code

Product type description:

(1)(2) 336-(3)(4)-(5)-(6)-(7)-(8)-(9)

(1)	
<b>Z</b>	Snap action
<b>T</b>	Slow action (not for AF/S)
(2)	
<b>S</b>	Plunger S
<b>R</b>	Roller plunger R
<b>H</b>	Roller lever H
<b>10H</b>	Rod lever 10H
<b>7H</b>	Roller lever 7H
<b>1K</b>	Offset roller lever 1K
<b>3K</b>	Angle roller lever 3K
<b>RMS</b>	Brass roller
(3)	
<b>11</b>	1 NO contacts/1 NC contact
<b>02</b>	2 NC contact
<b>20</b>	2 NO contacts, (switches with 2 NO contacts are not suitable for safety applications)
<b>01/01</b>	1 NC contact left / 1 NC contact right
(4)	
<b>Y</b>	IP 65
<b>Z</b>	IP 67
(5)	
<b>R</b>	without latching with latching
(6)	
<b>H</b>	Slow action with staggered contacts
<b>UE</b>	Slow action with overlapping contacts

(7)

<b>without</b>	Cable entry M20
<b>NPT</b>	Cable entry NPT 1/2"
<b>ST</b>	M12 connector with A-coding
<b>ST-2310</b>	M12 connector with B-coding

(8)

<b>2138</b>	Roller lever 7H for position switches with safety function
-------------	--

(9)

<b>1637</b>	Gold-plated contacts
-------------	----------------------

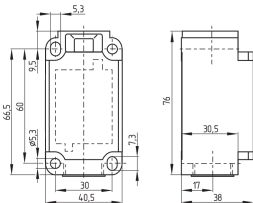
## Pictures

### Product picture (catalogue individual photo)



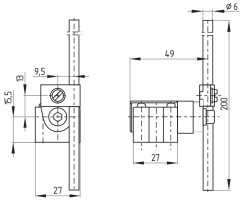
ID: k336hf03  
| 830.1 kB | .jpg | 352.778 x 1480.608 mm - 1000 x 4197 px - 72 dpi  
| 95.1 kB | .png | 74.083 x 310.797 mm - 210 x 881 px - 72 dpi  
| 12.2 kB | .jpg | 29.281 x 123.472 mm - 83 x 350 px - 72 dpi

### Dimensional drawing basic component



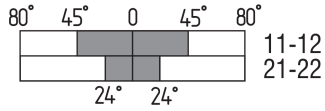
ID: 1-336g01  
| 51.4 kB | .cdr |  
| 4.1 kB | .png | 74.083 x 51.506 mm - 210 x 146 px - 72 dpi  
| 107.0 kB | .jpg | 352.778 x 245.181 mm - 1000 x 695 px - 72 dpi

### Dimensional drawing actuator



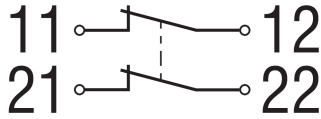
ID: 1h336g03  
 | 72.8 kB | .cdr |  
 | 3.8 kB | .png | 74.083 x 52.211 mm - 210 x 148 px - 72 dpi  
 | 84.2 kB | .jpg | 352.778 x 248.003 mm - 1000 x 703 px - 72 dpi

## Switch travel diagram



ID: kh335s16  
 | 17.1 kB | .cdr |  
 | 1.7 kB | .png | 74.083 x 24.342 mm - 210 x 69 px - 72 dpi  
 | 51.1 kB | .jpg | 352.778 x 116.064 mm - 1000 x 329 px - 72 dpi

## Diagram



ID: k2o--k01  
 | 48.8 kB | .jpg | 352.778 x 125.236 mm - 1000 x 355 px - 72 dpi  
 | 2.3 kB | .png | 74.083 x 26.458 mm - 210 x 75 px - 72 dpi

Schmersal Ltd., Sparrowhawk Close, WR14 1GL Malvern

The details and data referred to have been carefully checked. Images may diverge from original. Further technical data can be found in the manual. Technical amendments and errors possible.

Generated on: 12/04/2024, 13:57