



T4V10H 355-02ZH

- 3 cable entries lateral M 20 x 1.5
- Metal enclosure
- Wide range of alternative actuators
- Good resistance to oil and petroleum spirit
- 66,7 mm x 76 mm x 38 mm
- Actuator heads can be repositioned by 4 x 90°
- Mounting details to EN 50041
- Switching points to EN 50041
- **only for positioning tasks**

Data

Ordering data

Product type description	T4V10H 355-02ZH
Article number (order number)	101082498
eCl@ss number, version 12.0	27-27-06-01
eCl@ss number, version 11.0	27-27-06-01
eCl@ss number, version 9.0	27-27-06-01
ETIM number, version 7.0	EC000030
ETIM number, version 6.0	EC000030

General data

Housing construction form	Norm construction design
Housing material	Light alloy die-casting
Housing coating material	painted
Lever material	Metal film
Material of the rod	Plastic (Polyamid)
Gross weight	310 g

General data - Features

Number of safety contacts 2

Safety classification

Standards BG-GS-ET-15
EN ISO 13849-1
EN IEC 60947-5-1

Mission time 20 Year(s)

Safety classification - Safety outputs

B_{10D} Normally-closed contact (NC) 20,000,000 Operations

Mechanical data

Actuating element Rod lever

Mechanical life, minimum 30,000,000 Operations

Actuating speed, maximum 2.5 m/s

Note (Actuating speed) Actuating speed with actuating angle 30° to switch axis

Note (Switchover time) Switchover time in accordance with actuating speed

Actuating torque, minimum 0.3 Nm

Mechanical data - Connection technique

Termination Screw terminals M20 x 1.5

Cable section, minimum 0.75 mm²

Cable section, maximum 2.5 mm²

Note (Cable section) All indications including the conductor ferrules.

Mechanical data - Dimensions

Length x Width x Height Height of sensor: 111.5 mm (without rod)

Length of sensor	38 mm
Width of sensor	66.7 mm

Ambient conditions

Degree of protection	IP65 IP67
Ambient temperature	-30 ... +80 °C

Ambient conditions - Insulation values

Rated insulation voltage U_i	500 V
Rated impulse withstand voltage U_{imp}	6 kV

Electrical data

Thermal test current	10 A
Required rated short-circuit current	1,000 A
Utilisation category AC-15	230 VAC
Utilisation category AC-15	4 A
Utilisation category DC-13	24 VDC
Utilisation category DC-13	4 A
Switching element	Opener (NC)
Switching principle	Slow action with staggered contacts
Bounce duration, maximum	2 ms
Switching frequency	5,000 /h
Material of the contacts, electrical	Silver

Ordering code

Product type description:
(1)(2) 3(3)-(4)Z(5)-(6)-(7)-(8)-(9)

(1)

Z

Snap action

T	Slow action (not for AF/S)
(2)	
S	Plunger S
R	Roller plunger R
H	Roller lever H
10H	Rod lever 10H
7H	Roller lever 7H
1K	Offset roller lever 1K
3K	Angle roller lever 3K
RMS	Brass roller
4V.	Basic device for roller lever (without actuator)
(3)	
3	slim design
55	large design
(4)	
11	1 NO contacts/1 NC contact
02	2 NC contact
20	2 NO contacts (not suitable for safety applications)
01/01	1 NC contact left / 1 NC contact right
12	1 NO contact/2 NC contacts
03	3 NC contact
(5)	
H	Slow action with staggered contacts
UE	Slow action with overlapping contacts
2272	2272 Special roller bolt with collar
1183	with aluminium rod
1699-1	Exterior stainless steel bolts and clamp
(6)	
G24	with LED

(7)

without	Cable entry M20
M20	Cable entry M20
NPT	Cable entry NPT 1/2"
ST	M12 connector with A-coding (Caution! According to EN 60204-1, the versions with connector must only be used in PELV circuits.)
ST-2310	M12 connector with B-coding (Caution! According to EN 60204-1, the versions with connector must only be used in PELV circuits.)

(8)

2138	Roller lever 7H for position switches with safety function
-------------	--

(9)

1637	Gold-plated contacts
-------------	----------------------

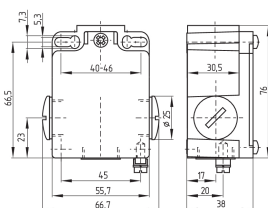
Pictures

Product picture (catalogue individual photo)



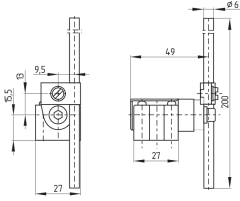
ID: k355hf03
| 321.5 kB | .jpg | 133.703 x 254 mm - 379 x 720 px - 72 dpi
| 114.8 kB | .png | 74.083 x 140.406 mm - 210 x 398 px - 72 dpi
| 64.8 kB | .jpg | 64.911 x 123.472 mm - 184 x 350 px - 72 dpi

Dimensional drawing basic component



ID: 1x355g01
| 32.9 kB | .cdr |
| 10.6 kB | .png | 74.083 x 51.506 mm - 210 x 146 px - 72 dpi
| 132.5 kB | .jpg | 352.778 x 245.181 mm - 1000 x 695 px - 72 dpi

Dimensional drawing actuator



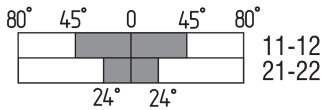
ID: 1h336g03

| 72.8 kB | .cdr |

| 3.8 kB | .png | 74.083 x 52.211 mm - 210 x 148 px - 72 dpi

| 84.2 kB | .jpg | 352.778 x 248.003 mm - 1000 x 703 px - 72 dpi

Switch travel diagram



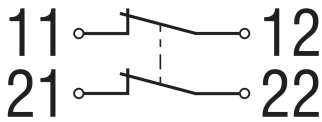
ID: kh335s16

| 17.1 kB | .cdr |

| 1.7 kB | .png | 74.083 x 24.342 mm - 210 x 69 px - 72 dpi

| 51.1 kB | .jpg | 352.778 x 116.064 mm - 1000 x 329 px - 72 dpi

Diagram



ID: k2o--k01

| 48.8 kB | .jpg | 352.778 x 125.236 mm - 1000 x 355 px - 72 dpi

| 2.3 kB | .png | 74.083 x 26.458 mm - 210 x 75 px - 72 dpi

Schmersal Ltd., Sparrowhawk Close, WR14 1GL Malvern

The details and data referred to have been carefully checked. Images may diverge from original. Further technical data can be found in the manual. Technical amendments and errors possible.

Generated on: 21/02/2024, 15:38