



NO IMAGE
AVAILABLE

T4VH 336-11YR-1058

- Design to EN 50041
- Lever angle adjustable in 10° steps
- Thermoplastic enclosure
- Double-insulated
- Good resistance to oil and petroleum spirit
- Wide range of alternative actuators
- Actuator heads can be repositioned by 4 x 90°
- 1 Cable entry M 20 x 1.5

Data

Ordering data

Product type description	T4VH 336-11YR-1058
Article number (order number)	151142571
eCl@ss number, version 12.0	27-27-26-01
eCl@ss number, version 11.0	27-27-26-01
eCl@ss number, version 9.0	27-27-26-01
ETIM number, version 7.0	EC000030
ETIM number, version 6.0	EC000030

General data

Housing construction form	Norm construction design
Actuator type to EN 50041	A
Housing material	Plastic, glass-fibre-reinforced
Lever material	Metal film
Gross weight	190 g

Safety classification

Standards	BG-GS-ET-15 EN ISO 13849-1 EN IEC 60947-5-1
Mission time	20 Year(s)

Mechanical data

Actuating element	Roller lever
Roller material	Plastic
Mechanical life, minimum	30,000,000 Operations
Actuating speed, maximum	2.5 m/s
Note (Actuating speed)	Actuating speed with actuating angle 30° to switch axis
Actuating torque, minimum	0.3 Nm

Mechanical data - Connection technique

Termination	Screw terminals M20 x 1.5
Cable section, minimum	0.75 mm ²
Cable section, maximum	2.5 mm ²
Note	All indications including the conductor ferrules.

Mechanical data - Dimensions

Length of sensor	60.5 mm
Width of sensor	40.5 mm
Height of sensor	129.5 mm

Ambient conditions

Ambient temperature	-30 ... +80 °C
---------------------	----------------

Ambient conditions - Insulation values

Rated impulse withstand voltage U_{imp} 6 kV

Electrical data

Thermal test current	10 A
Required rated short-circuit current	1,000 A
Utilisation category AC-15	230 VAC
Utilisation category AC-15	4 A
Utilisation category DC-13	24 VDC
Utilisation category DC-13	4 A
Maximum switching frequency	5,000 /h
Material of the contacts, electrical	Silver

Ordering code

Product type description:

(1)(2) 336-(3)(4)-(5)-(6)-(7)-(8)-(9)

(1)

Z	Snap action
T	Slow action (not for AF/S)

(2)

S	Plunger S
R	Roller plunger R
H	Roller lever H
10H	Rod lever 10H
7H	Roller lever 7H
1K	Offset roller lever 1K
3K	Angle roller lever 3K
RMS	Brass roller

(3)

11	1 NO contacts/1 NC contact
02	2 NC contact

20	2 NO contacts, (switches with 2 NO contacts are not suitable for safety applications)
01/01	1 NC contact left / 1 NC contact right
(4)	
Y	IP 65
Z	IP 67
(5)	
	without latching
R	with latching
(6)	
H	Slow action with staggered contacts
UE	Slow action with overlapping contacts
(7)	
without	Cable entry M20
NPT	Cable entry NPT 1/2"
ST	M12 connector with A-coding
ST-2310	M12 connector with B-coding
(8)	
2138	Roller lever 7H for position switches with safety function
(9)	
1637	Gold-plated contacts

Pictures

Product picture (catalogue individual photo)



NO IMAGE
AVAILABLE

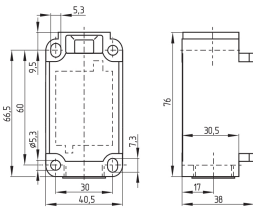
ID: no-pic01

| 98.4 kB | .jpg | 352.778 x 352.778 mm - 1000 x 1000 px - 72 dpi

| 3.3 kB | .png | 74.083 x 74.083 mm - 210 x 210 px - 72 dpi

| 26.4 kB | .jpg | 123.472 x 123.472 mm - 350 x 350 px - 72 dpi

Dimensional drawing basic component



ID: 1-336g01

| 51.4 kB | .cdr |

| 4.1 kB | .png | 74.083 x 51.506 mm - 210 x 146 px - 72 dpi

| 107.0 kB | .jpg | 352.778 x 245.181 mm - 1000 x 695 px - 72 dpi

Schmersal Ltd., Sparrowhawk Close, WR14 1GL Malvern

The details and data referred to have been carefully checked. Images may diverge from original. Further technical data can be found in the manual. Technical amendments and errors possible.

Generated on: 02/05/2024, 13:42