

DO NOT SCALE PRINT

Honeywell

SWITCH - BASIC

CATALOGUE LISTING

V5B010CB1E

V5B010CB1E

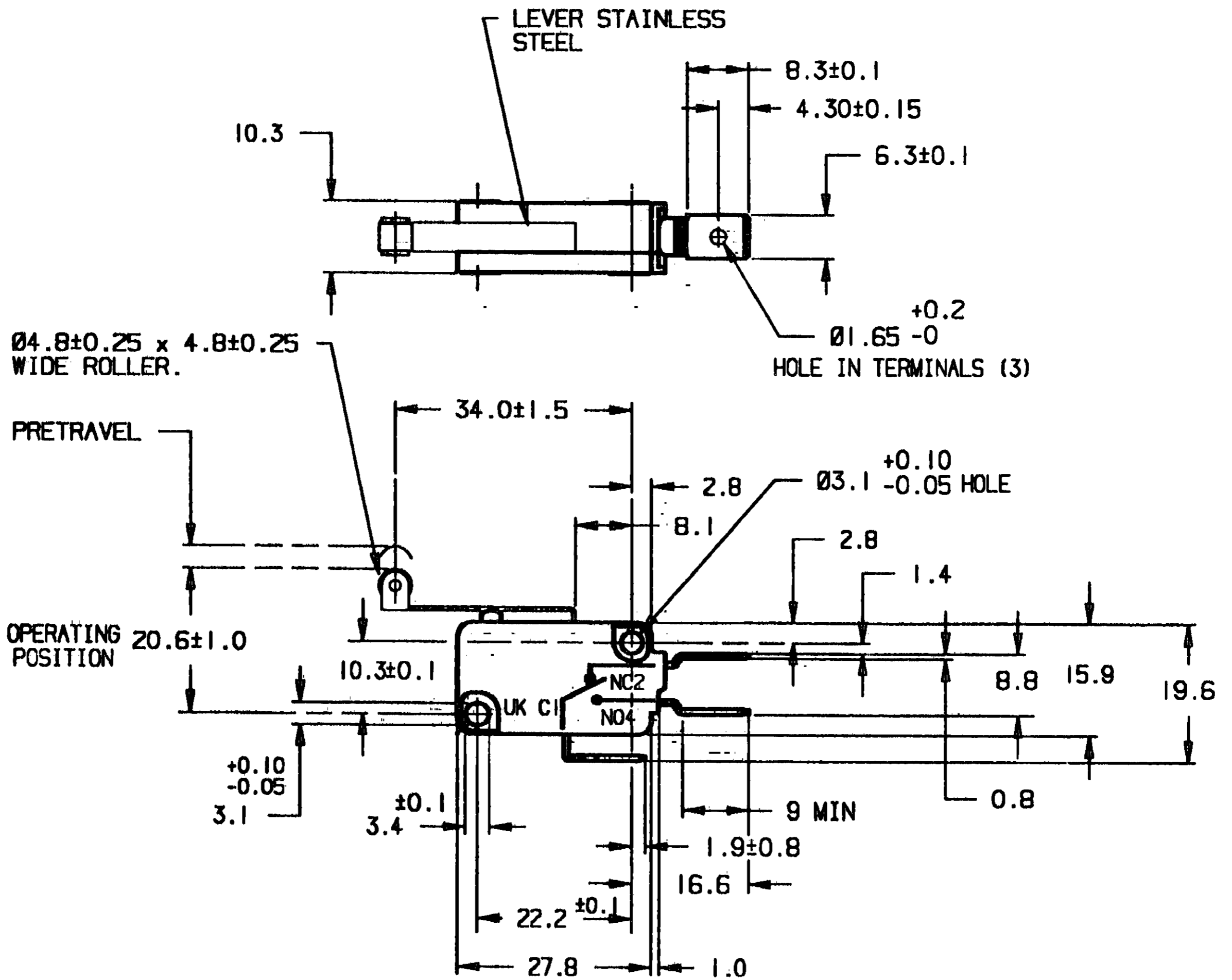
M

DRAWING NUMBER

ISSUE

5

RELEASE NUMBER CN-13409 REPLACES

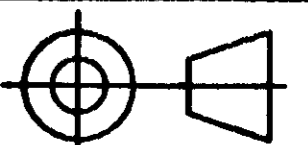


NOTES :-

1. MOUNTING HOLES WILL ACCEPT $\varnothing 3$ MAX PINS OR SCREWS.
2. TERMINALS WILL ACCEPT 6.3 WIDE QUICK CONNECT RECEPTACLES AND COMPLY WITH BS3955 AND DIN46244 REQUIREMENTS.
3. SWITCHES ARE APPROVED BY SEV AT 16(4)A 250VAC.
4. THERMOPLASTIC CASE, COVER AND PHENOLIC PLUNGER.

THE COPYRIGHT OF THIS DRAWING IS THE PROPERTY OF HONEYWELL LTD. THE DRAWING IS SUPPLIED IN CONFIDENCE AND MUST NOT BE USED FOR ANY PURPOSE OTHER THAN THAT FOR WHICH IT IS SUPPLIED.

THIRD ANGLE PROJECTION



CHARACTERISTICS

OPERATING FORCE	180g MAX
DIFFERENTIAL FORCE	
RELEASE FORCE	30g MIN
FREE POSITION	
PRETRAVEL	3.2 MAX
DIFFERENTIAL TRAVEL	0.75 MAX
OVERTRAVEL	1.2 MIN
FULL OVERTRAVEL FORCE	

ELECTRICAL DATA

CONTACT ARRANGEMENT
S.P.D.T.

BREAK DISTANCE

SCALE :- FULL SIZE

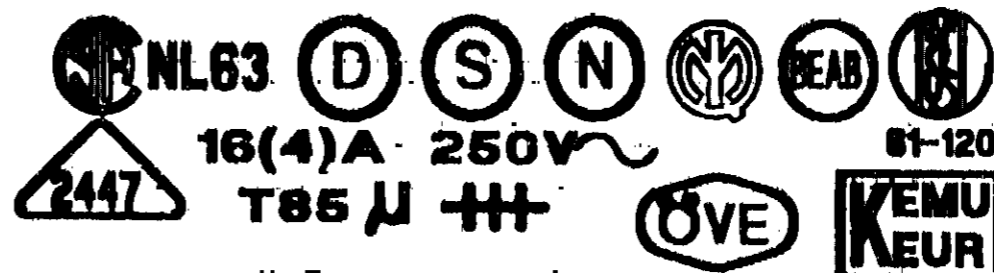
DIMENSIONS ARE IN MILLIMETRES

TOLERANCES UNLESS OTHERWISE STATED

± 0.4

ANGULAR \pm

MODIFY ON CAD3D SYSTEM ONLY



5.87
9/95
9/95
9/95
DRAWN R.D.
CHECK
DESIGN
AUTHOR N. P. ...